

# Proven Solutions for Critical Power





# Listening to Customer Needs Since 1905

## THE G&W ELECTRIC APPROACH

After over a century of service and innovation in electrical system solutions and products, G&W Electric knows power. And more importantly, we know the power of listening. By taking the time to fully understand the needs and goals of each customer's application, we are able to devise and deliver solutions that meet those needs precisely. We ask the right questions, we take the responses to heart and we answer only to our customers. This commitment has earned us our reputation as a reliable partner, engineering creative solutions that get the job done — across various industries, from everyday to mission-critical applications.





## Long-Term Reliability

Loss of power in critical industries and applications can be catastrophic. That is why our engineers create the most innovative solutions on the market — including padmount, vault and pole top distribution switches, reclosers, distribution automation, current limiting system protection, and distribution and transmission voltage cable accessories — that deliver the utmost reliability, giving you added peace of mind.

From initial consultation through implementation, you can count on our team to help you overcome challenges and meet your critical power goals. We service products no matter where they are in their lifecycle, giving you a solution that lasts for the long term. And with experts on call 24/7 to answer any product or warranty questions you may have, you can rest easy knowing that your needs are our top priority.

Our state-of-the-art facilities allow us to provide education and support across our full suite of products. The G&W Customer Solutions Center offers a wealth of information, including simulations and real-world demos highlighting the superior performance of our products. We give you the tools and education you need to face your next critical power challenge with confidence.

We perform in-house factory acceptance testing to ensure products meet all requirements prior to delivery, with engineering and design assistance available if needed. Our facilities are ISO 9001, ISO 14001 and LEED Gold certified (Bolingbrook Headquarters).

## Capabilities for Critical Power Industries

Whether you require solutions for data centers, hospitals or other power-critical industries, our products are built to perform seamlessly in even the most demanding environments. Our deep understanding of critical power requirements complements our listening approach, giving you solutions that meet your exact infrastructure or smart grid specifications with unparalleled reliability and efficiency. Rather than modifying an off-the-shelf product, G&W Electric will custom engineer the best product fit — prioritizing the compatibility of your environment and your equipment.





# Reliable Power Where You Need It Most

Safe. Efficient. Scalable. The demands of critical power infrastructures require solutions that deliver today and adapt for the future. With optimal flexibility, G&W Electric products can reduce operation and construction costs with easy-to-implement system upgrades.

## HOSPITALS

Keep life-saving patient equipment up and running by coordinating with backup services for reliable emergency power.

## UNIVERSITIES

Improve upon aging infrastructure with service equipment designed to last and support sensitive research and critical facilities.

## DATA CENTERS

Meet dense power requirements with robust designs while offering reliability for high-speed computing and data storage.

## MILITARY

Overcome potential power failure with rugged products built for challenging and demanding environments.

## RENEWABLES

Distribute power back to the grid and keep power purchasing agreements intact with solutions built to mitigate costly unplanned outages.





# Our suite of products are designed for decades of use, giving you the long-term reliability you need.

## TRIDENT®

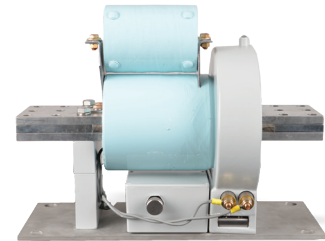
Application Benefit: Configuration Flexibility and Safety

Trident is a padmount and vault-style solid dielectric insulated switchgear that offers overcurrent protection and a dead-front design.

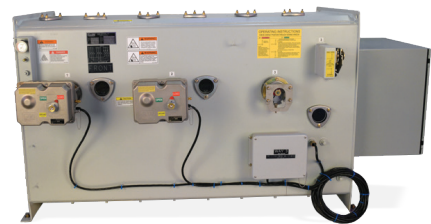
- Available with SafeVu® visible break feature, which provides a clear visible open as an added safety component
- Features Trident-SR magnetic actuators, which require no external mechanisms to remotely and automatically switch the device
- Fully submersible and weatherproof
- Maintenance free with solid dielectric insulation
- Design flexibility with robust, modular construction. Manual operation or smart grid and LaZer® compatible



Trident®



CLiP®



SF6

## SF6

Application Benefit: Reliability and Safety

SF6 is a padmount and vault-style insulated switching solution that provides load and fault interrupting.

- Designed for systems rated 15.5 through 38kV, 900A continuous current
- Fully submersible and weatherproof
- Design flexibility with robust, modular construction
- Maintenance-free operation for continuous performance
- Manual operation or smart grid and LaZer® compatible

## CLiP®

Application Benefit: Ideal for Unique Protection Needs

CLiP (Current Limiting Protector) is an overcurrent protection device providing unparalleled system protection.

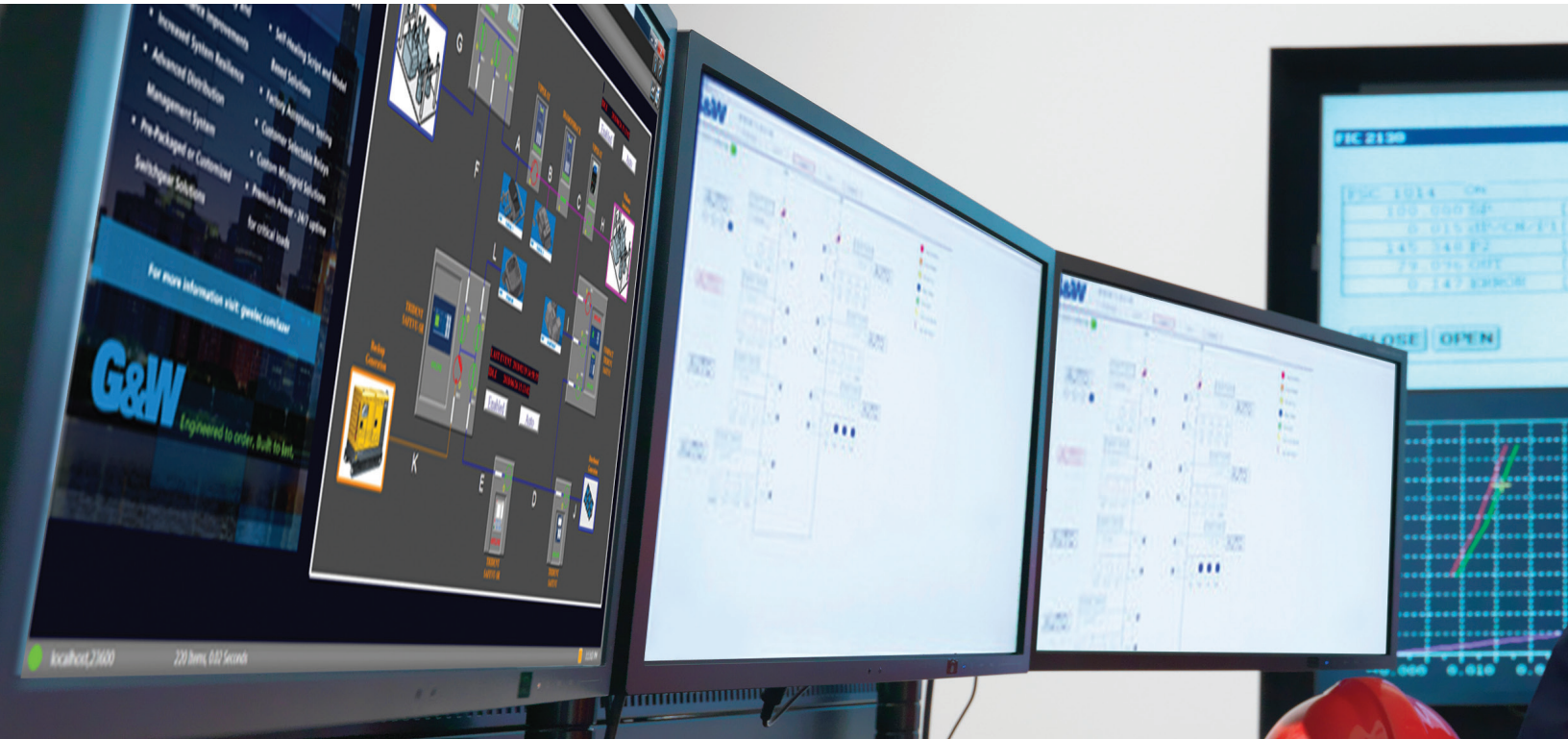
- Allows for system upgrades without replacing under-rated equipment
- Package as a reactor bypass to eliminate costly operating losses
- Transformer protection, minimizing damage by reducing fault energy
- Cogenerator protection while limiting contribution to the system
- Limit arc flash exposure



# Power Grid Automation

LaZer® helps you meet the automation requirements of today, including:

- Pre-engineered or custom designed automation solutions
- Fault Location Isolation and Service Restoration (FLISR)
- Master Station Solution
- Voltage loss reconfiguration / Automatic transfer



## Automation Solutions for Next-Generation Distribution System Grid

As the world's aging infrastructure — and its aging workforce — strive to keep pace with increased demand for reliable and affordable energy, today's energy providers are facing more pressure than ever to implement effective Power Grid automation.

The G&W Electric LaZer® Automation System is the culmination of decades of experience designing innovative power automation solutions. From simple automatic transfer schemes to the most complex SCADA/master station configurations, our comprehensive solutions are custom engineered to meet your precise application needs. These solutions feature full system integration of new and existing components to maximize your technology investments.

### Future-Proof Your System

By updating your power grid network with intelligent devices, networked communications, and decision-making software today, you can ensure a bright future for your grid tomorrow.

### Performance Guarantee

G&W Electric provides a 3 or 5-year parts and performance warranty depending on the Intelligent Electronic Device (IED) used. We'll achieve reliability indices (SAIDI, SAIFI, CAIDI and MAIFI) improvement of 30%, based on customers' existing indices for the installation after one year of equipment energization.





### How We Work with You

When you work with G&W Electric, you partner with a powerhouse of innovators, technical experts and automation engineers.

We start by understanding your needs for improving your current system, while also addressing your vision for the future. In the end, we deliver a user-specific, best-in-class Power Grid Automation solution that meets your needs today and well into the future.



## A PARTNER FOR TODAY AND TOMORROW

Working with G&W Electric means you're getting a partner for life. Because we're a family-owned company, we have more flexibility to put our customers first. Between our consultative approach to each engagement, our educational tools and our expertise in understanding the power needs of both today and tomorrow, you can rely on G&W Electric to meet all your critical power needs.

## AFTERMARKET SERVICES

In partnering with G&W Electric, you have access to comprehensive aftermarket services to ensure your needs are met. We offer on-site commissioning and equipment inspection, plus on-site training and support. Should you need off-site support, our phone lines are open and ready to assist you **24 hours a day**. We are continually adding services and resources, helping our customers get the most out of their G&W Electric products.

Contact us today

+1.708.388.5010 or [info@gwelec.com](mailto:info@gwelec.com)

**G&W Electric**

Engineered to order. Built to last.

Since 1905, G&W Electric has been a leading provider of innovative powergrid solutions, including the latest in load and fault interrupting switches, reclosers, system protection equipment, power grid automation and transmission and distribution cable terminations, joints and other cable accessories. G&W is headquartered in Bolingbrook, Illinois, U.S.A., with manufacturing facilities and sales support in more than 100 countries, including Canada, Italy, China, Mexico, Brazil, India, UAE and Singapore. We help our customers meet their challenges and gain a competitive edge through a suite of advanced products and technical services.

[gwelectric.com](http://gwelectric.com)

© 2018 G&W Electric  
GW06-2018 03/21