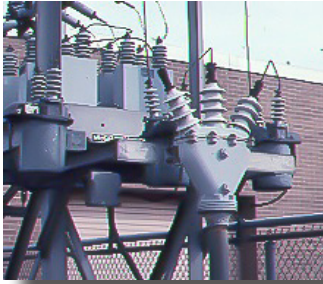


Distribution Cable Accessories

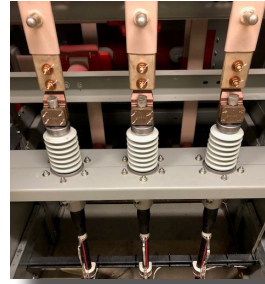
G&W Electric offers a wide variety of distribution cable terminations for extruded dielectric, paper insulated or armored cable, up to 46kV. Cable terminations are supplied with high grade, wet process porcelain insulators for superior electrical performance. Our joints extend from simple tape splice kits to innovative epoxy molded designs.



Capnut Terminations

Capnut Terminations - The Original Termination

- Voltage Range: 15kV-46kV
- Cable types: Single conductor and three conductor XLPE, EPR, PILC
- Field assembled: More customized options
- Stress relief: Taped stress cone



Slip-on Terminations

Slip-On Terminations

- Factory Filled
- Voltage Range: 15kV-46kV
- Cable types: Single conductor XLPE, EPR, PILC
- Factory assembled: simple installation
- Stress relief: Built in to termination



PSC Termination

PSC Terminations

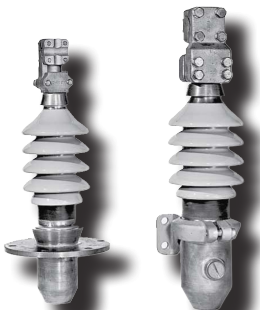
- Dry Porcelain Termination
- Voltage Range: 15kV-46kV
- Cable types: Single conductor XLPE, EPR
- Factory assembled: simple installation
- Stress relief: Elastomer stress cones



Easy-On II Terminations

Easy-On II Terminations

- Lightweight termination
- Voltage Range: 15kV-34.5kV
- Cable types: Single conductor XLPE, EPR
- Factory assembled: simple installation
- Stress relief: Elastomer stress cones



Sodertite/Crimptite Terminations

Sodertite/Crimptite Terminations

- Voltage Range: 15kV-46kV
- Cable types: Single conductor and three conductor XLPE, EPR, PILC, LPGF, MPGF
- Field assembled: More customized options
- Stress relief: Taped stress cone



CTM

Joints

- Voltage Range: 15kV-35kV
- Cable types: Single conductor and three conductor XLPE, EPR, PILC, LPGF, MPGF
- Transition joints available

Our portfolio of distribution and transmission cable accessories reflects our long history of industry-leading research and development. Go to www.gwelectric.com to find the G&W Electric representative near you.